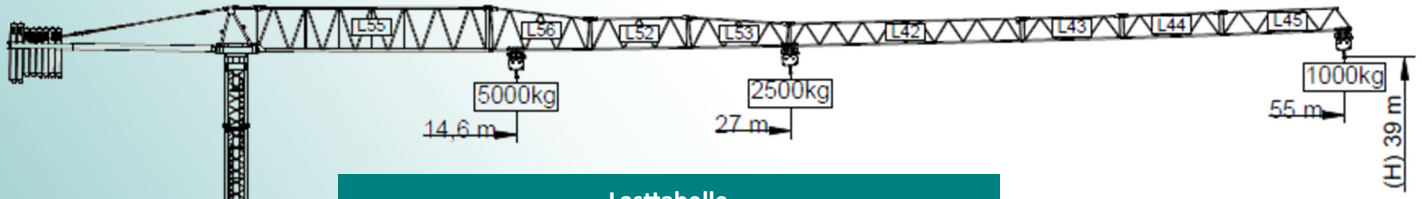


Turmdrehkran

SGT 5510 TL



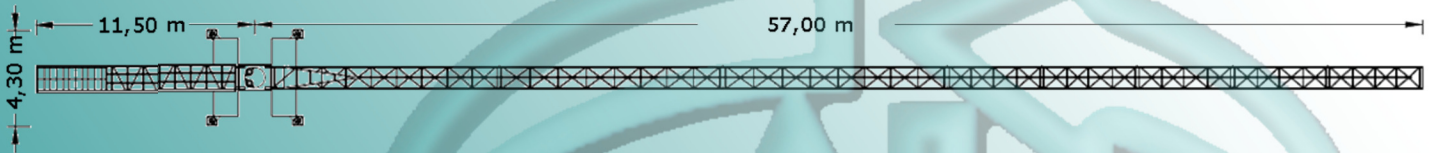
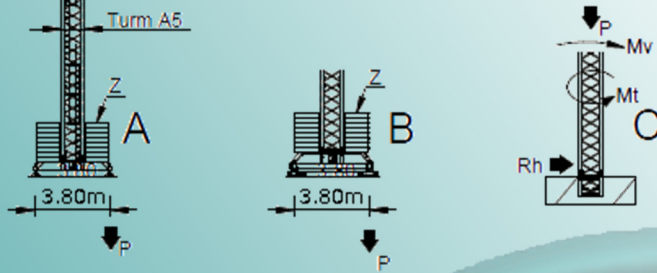
SGT 5510 TL



Lasttabelle						
A/B			C			
H	Z	P	Mv	P	Rh	Mt
m	kN	kN	kNm	kN	kN	kNm
21	450	388	1013	321	25	67
24	500	409	1045	329	28	67
27	500	417	1082	337	32	67
30	500	426	1116	345	35	67
33	550	447	1154	353	39	67
36	550	458	1203	361	42	67
39	600	481	1247	369	46	67


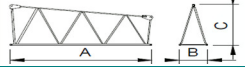
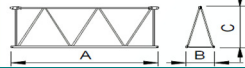
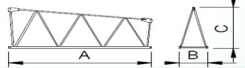




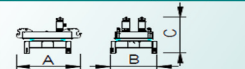

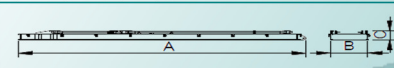






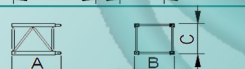


Legende:

H	Hakenhöhe
Z	Zentralballast
P	Eckdruck
Mv	Lastmoment
Rh	Windlast





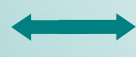


Gegenballast	Auslegerlänge Auslegerstücke	Kg/m		m kg	13	18	23	28	33	40	45	50	55
		5000	2500										
13000 kg	55 m		27,0		2500	2500	2500	2500	2000	1600	1400	1200	1000
5x2000+2x1500	L55+L56+L52+L53+L42+L43+L44+L45	14,6			5000	3980	3020	2500	2000	1600	1400	1200	1000
13000 kg	50		28,8		2500	2500	2500	2500	2130	1670	1440	1250	
5x2000+2x1500	L55+L56+L52+L53+L42+L43+L45	15,6			5000	4270	3340	2590	2130	1670	1440	1250	
11000 kg	45		29,7		2500	2500	2500	2500	2210	1740	1500		
4x2000+2x1500	L55+L56+L53+L42+L43+L45	16,1			5000	4420	3360	2680	2210	1740	1500		
10000 kg	40		30,5		2500	2500	2500	2500	2280	1800			
5x2000	L55+L56+L53+L42+L45	16,5			5000	4550	3460	2760	2280	1800			
8000 kg	33		29,6		2500	2500	2500	2500	2200				
4x2000	L55+L56+L53+L42+L45	16,0			5000	4540	3450	2760	2200				
7000 kg	28		28,0		2500	2500	2500	2500					
2x2000+2x1500	L55+L56+L53+L42+L45	15,2			5000	4180	3170	2500					

SGT 5510 TL

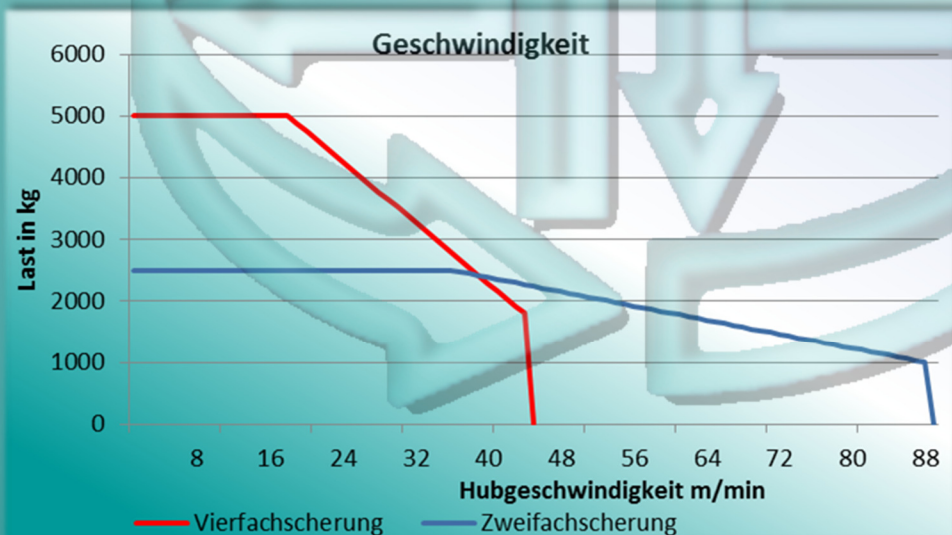
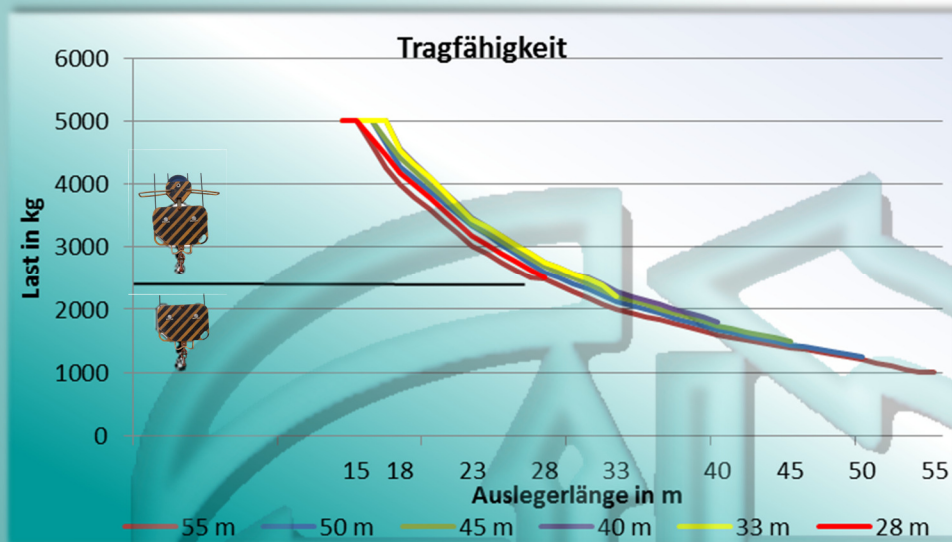
Bauteile	A (mm)	B (mm)	C (mm)	Kg	
Hauptausleger L55		11950	1210	2600	3100
Auslegerstück 2 L56		5200	1160	1930	590
Auslegerstück 3 L52		5200	1160	1650	535
Auslegerstück 4 L53		5200	1160	1650	510
Auslegerstück 5 L42		11820	1160	1210	820
Auslegerstück 6 L43		5100	1160	1210	260
Auslegerstück 7 L44		5100	1160	1210	230
Auslegerstück 8 L45		6800	1160	1210	290
Drehbühne		2250	1600	2050	2640
Drehbühnenspitze		1660	1320	1720	720
Gegenausleger		10550	1500	500	3720
Gegenballast		1160	320	2530	2x1500
		1160	330	3140	5x2000
Total:				23345	
Turmstück A5 12 m		11985	1180	1180	2800
Turmstück A5 6 m		6075	1180	1180	1510
Turmstück A5 3 m		3120	1180	1180	870
Turmstück teleskopierbar A5 3 m		3090	1385	1385	890
Fundamenturmstück A5		1275	1160	1160	450
Kreuz 3,8 x 3,8 m A5		5530	500	750	1250
		2270	360	750	2x635
Total:				9040	

SGT 5510 TL

Bewegungsarten			
Bewegungsart		Geschwindigkeit	Motorleistung
	HUB	 0-88 m/min	15 kW
		 0-44 m/min	
	Drehen	0 a 1 r.p.m	2x3 daN.m
	Laufkatze	0 a 60 m/min	3 kW
	Schiene- fahrwerk *	15 m/min	2x3 kW

* Optional

	Spannung	400 V ± 5% - (50 Hz)
	Elektrische Leistung	30 kVA



SGT 5510 TL



Zelmer Baumaschinen GmbH
Auf der Horst 4
33378 Rheda-Wiedenbrück
Tel: +49 5242 37 86 86
Fax: +49 5242 37 86 87
kontakt@kranevermietung.de
www.zkran.de

